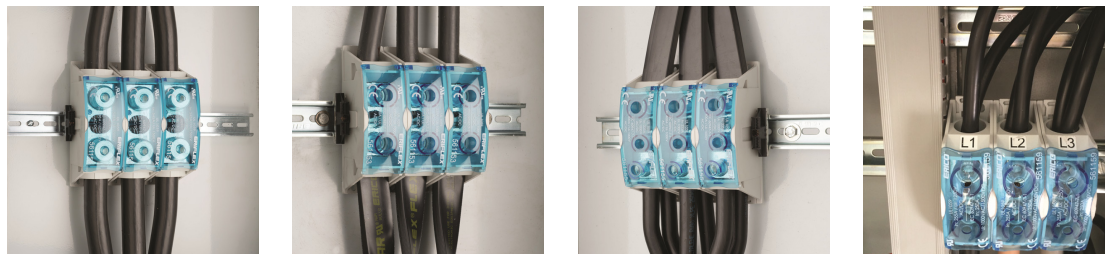
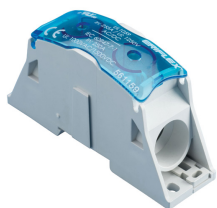
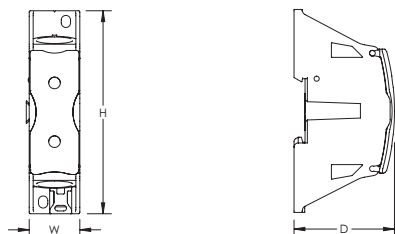


Power Block



nVent ERIFLEX Power Blocks are the main DIN mounted output/input devices for connection between primary and secondary switchboard, or main input/output connection for machine or industrial equipment (such as inverter, air conditioning machines, etc.). The high short circuit rated large cross section blocks offer time savings and reliability in every panel configuration. The complete Power Blocks range offers multiple connection types with up to four cables, nVent ERIFLEX Flexibar Advanced, or IBS/IBSB Advanced power braids.

- Can be connected with round cross section cable or flat connection system like nVent ERIFLEX Flexibar Advanced or IBS/IBSB Advanced Insulated Braided Conductor
- Compact power block with high short circuit current rating
- Tinned copper or aluminum block allows for copper or aluminum conductor direct connections, or using ferrule
- Screw retaining cover is hinged and removable
- Design allows for visual inspection of conductor and confirmation of connection
- Modular snap-together blocks for building multi-pole power blocks
- Easily clips onto DIN rail or mounts to panel with screws
- Voltage detection and measurement connection
- 95% fill ratio
- RoHS compliant
- Halogen free plastic housing excluding the blue protection cover
- Conforms to EN 45545 obtaining an HL3 classification for chapter R23 and HL2 classification for chapter R22



Finish: Tinned



Part Number	Article Number	Type	Typical Application Current Rating, IEC	Material	Line Side Max Conductor Size, IEC	Load Side Max Conductor Size, IEC	Short Term Withstand Current (Icw) 1s	Certifications
SB80AL	561160	Cable-Cable	100 A	Aluminum, Thermoplastic	16 mm ²	16 mm ²	3.0 kA	CE, ERIFLEX SB, cURus, EN 45545, RoHS
SB80	561150	Cable-Cable	100 A	Copper, Thermoplastic	16 mm ²	16 mm ²	3.0 kA	CE, ERIFLEX SB, EAC, EN 45545, RoHS, UR
SB125	561158	Cable-Cable	170 A	Copper, Thermoplastic	35 mm ²	35 mm ²	6.0 kA	CE, ERIFLEX SB, EAC, EN 45545, RoHS, UR
SB125AL	561161	Cable-Cable	180 A	Aluminum, Thermoplastic	35 mm ²	35 mm ²	6.0 kA	CE, ERIFLEX SB, cURus, EN 45545, RoHS

Part Number	Article Number	Type	Typical Application Current Rating, IEC	Material	Line Side Max Conductor Size, IEC	Load Side Max Conductor Size, IEC	Short Term Withstand Current (I _{cw}) 1s	Certifications
SB160AL	561162	Cable-Cable	230 A	Aluminum, Thermoplastic	70 mm ²	70 mm ²	14.4 kA	CE, ERIFLEX SB, cURus, EN 45545, RoHS
SB160	561151	Cable-Cable	250 A	Copper, Thermoplastic	70 mm ²	70 mm ²	14.4 kA	CE, ERIFLEX SB, EAC, EN 45545, RoHS, UR
SB250AL	561163	Cable-Cable	400 A	Aluminum, Thermoplastic	120 mm ²	120 mm ²	14.4 kA	CE, ERIFLEX SB, cURus, EN 45545, RoHS
SB250	561159	Cable-Cable	400 A	Copper, Thermoplastic	120 mm ²	120 mm ²	14.4 kA	CE, ERIFLEX SB, EAC, EN 45545, RoHS, UR
SB400AL	561164	Cable-Cable	500 A	Aluminum, Thermoplastic	240 mm ²	240 mm ²	28.8 kA	CE, ERIFLEX SB, cURus, EN 45545, RoHS
SB400	561152	Cable-Cable	500 A	Copper, Thermoplastic	240 mm ²	240 mm ²	28.8 kA	CE, ERIFLEX SB, EAC, EN 45545, RoHS, UR
SB630AL	561168	Cable-Cable	630 A	Aluminum, Thermoplastic	500 mm ²	500 mm ²	60.0 kA	CE, ERIFLEX SB, cURus, EN 45545, RoHS
SB630	561156	Cable-Cable	630 A	Copper, Thermoplastic	500 mm ²	500 mm ²	60.0 kA	CE, ERIFLEX SB, EAC, EN 45545, RoHS, UR
SB2C400AL	561166	Cable-2 Cables	400 A	Aluminum, Thermoplastic	240 mm ²	{2} 120 mm ²	28.8 kA	CE, ERIFLEX SB, cURus, EN 45545, RoHS
SB2C250	561170	Cable-2 Cables	400 A	Copper, Thermoplastic	120 mm ²	{2} 120 mm ²	14.4 kA	CE, ERIFLEX SB, EN 45545, RoHS, UL
SB2C400	561154	Cable-2 Cables	400 A	Copper, Thermoplastic	240 mm ²	{2} 120 mm ²	28.8 kA	CE, ERIFLEX SB, EAC, EN 45545, RoHS, UR
SB2C1000AL	561174	Cable-2 Cables	1,000 A	Aluminum, Thermoplastic	500 mm ²	{2} 300 mm ²	72.0 kA	CE, ERIFLEX SB, EN 45545, RoHS, UL
SB2C2C1000AL	561175	2 Cables-2 Cables	1,000 A	Aluminum, Thermoplastic	{2} 300 mm ²	{2} 300 mm ²	72.0 kA	CE, ERIFLEX SB, EN 45545, RoHS, UL
SBF250	561171	Flexibar-Cable	250 A	Copper, Thermoplastic	70 mm ²	120 mm ²	14.4 kA	CE, ERIFLEX SB, EN 45545, RoHS, UL, UR
SBF400AL	561165	Flexibar-Cable	400 A	Aluminum, Thermoplastic	100 mm ²	240 mm ²	28.8 kA	CE, ERIFLEX SB, cURus, EN 45545, RoHS
SBF400	561153	Flexibar-Cable	400 A	Copper, Thermoplastic	100 mm ²	240 mm ²	28.8 kA	CE, ERIFLEX SB, EAC, EN 45545, RoHS, UR
SBF630AL	561169	Flexibar-Cable	630 A	Aluminum, Thermoplastic	240 mm ²	500 mm ²	60.0 kA	CE, ERIFLEX SB, cURus, EN 45545, RoHS
SBF630	561157	Flexibar-Cable	630 A	Copper, Thermoplastic	240 mm ²	500 mm ²	60.0 kA	CE, ERIFLEX SB, EAC, EN 45545, RoHS, UR
SBF2C400AL	561167	Flexibar-2 Cables	400 A	Aluminum, Thermoplastic	100 mm ²	{2} 120 mm ²	28.8 kA	CE, ERIFLEX SB, cURus, EN 45545, RoHS
SBF2C400	561155	Flexibar-2 Cables	400 A	Copper, Thermoplastic	100 mm ²	{2} 120 mm ²	28.8 kA	CE, ERIFLEX SB, EAC, EN 45545, RoHS, UR
SBF2C250	561172	Flexibar-2 Cables	400 A	Copper, Thermoplastic	70 mm ²	{2} 120 mm ²	14.4 kA	CE, ERIFLEX SB, EN 45545, RoHS, UL

Part Number	Article Number	Type	Typical Application Current Rating, IEC	Material	Line Side Max Conductor Size, IEC	Load Side Max Conductor Size, IEC	Short Term Withstand Current (Icw) 1s	Certifications
SBF2C630AL	561173	Flexibar-2 Cables	800 A	Aluminum, Thermoplastic	240 mm ²	240 mm ²	60.0 kA	CE, ERIFLEX SB, EN 45545, RoHS, UL
SBF3C1000AL	561176	Flexibar-3 Cables	1,000 A	Aluminum, Thermoplastic	500 mm ²	(3) 300 mm ²	72.0 kA	CE, ERIFLEX SB, EN 45545, RoHS, UL
SBF4C1600AL	561177	Flexibar-4 Cables	1,600 A	Aluminum, Thermoplastic	800 mm ²	(4) 300 mm ²	96.0 kA	CE, ERIFLEX SB, EN 45545, RoHS, UL

Design Guideline for Distribution Blocks, Power Blocks and Power Terminals										
Derating according to Ambient* Temperature (°C) to maintain working temperature of 85°C										
Ambient Temperature (°C)	30°	35°	40°	45°	50°	55°	60°	65°	70°	75°
Derating Coefficient (d)	1	1	1	0.94	0.88	0.82	0.75	0.67	0.58	0.47
*environment around the terminal blocks inside the enclosure										

SBF250 is UL® 1953 Listed when used with SB250SPCR. Max Working Voltage for UL 1953 applications is 1250 VAC/DC.
Blue protection cover is less than 7% of the overall product weight.

UL, UR, cUL, cUR, cULus and cURus are registered certification marks of UL LLC.

WARNING

nVent products shall be installed and used only as indicated in nVent's product instruction sheets and training materials. Instruction sheets are available at www.erico.com and from your nVent customer service representative. Improper installation, misuse, misapplication or other failure to completely follow nVent's instructions and warnings may cause product malfunction, property damage, serious bodily injury and death and/or void your warranty.

© 2020 nVent All rights reserved

nVent, nVent CADDY, nVent ERICO, nVent ERIFLEX and nVent LENTON are owned by nVent or its global affiliates.

All other trademarks are the property of their respective owners. nVent reserves the right to change specifications without prior notice.